



Elaina J. Appleby and Erika Joanne Frei
Turtles might be slow, but this one sure paints up quick! Kids and adults will have a great time painting him together.

In painting with children, start with the basics: how to set up the paints and painting area, and how to care for the brush. This project will introduce kids to basecoating, stamping, dip-dots, and dry-brushing.

Visit the Junior Artists Clubhouse on the SDP website for more information and super ideas: www.decorativepainters.org.

PREPARATION LILY PAD

Bear in mind that adult supervision is required throughout this project! This project is not designed to be used

as a toy but for decoration purposes only.

Locate the design on page 138, and trace the shapes of the feet, tail, and lily pad onto tracing paper. Now place the tracing you've just made on

Attention educators! This JAC project has been designed to conform to U.S. National Visual Arts Standards. As such, it is suitable material for use in public and private schools, scouting, home-schooling, after-school child care, camps, and more. SDP approves its reproduction and use for educational purposes; see our website for information and more great ideas!

www.decorativepainters.org

the green Fun Foam, and slide a sheet of dark graphite paper in between the two. Follow the lines of your tracing again to transfer the designs onto the green foam sheet, and then cut the shapes out.

FROG

Make sure that the saucers and wooden knob are smooth and free of dust before beginning. Carefully glue the flat bottoms of the clay saucers together using the cool-melt glue gun. Use the 3/4-inch flat brush to paint just the inside of one of the turtle shell dishes (clay saucers) and the turtle head (round knob) with *Light Green*. Once dry, add another coat and let dry. Use the flat brush once again to paint the rest of the turtle shell with *Dark*

Painter's Checklist

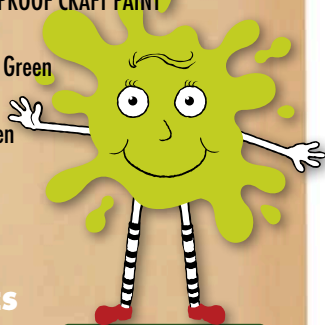
SURFACE

The turtle is painted on two clay saucers (3-1/2", or 8.89cm, in diameter) and a round, wooden knob (1-1/2", or 3.81cm, in diameter). The lily pad is approx. 6" long and 5-1/2" wide (15.24 x 13.97cm), and is made of medium green Fun Foam.

PALETTE

WEATHERPROOF CRAFT PAINT

Black
Dark Teal Green
Fuchsia
Light Green
Orange
Purple
Yellow



JAC says,
"Teach a kid to paint!"

BRUSHES

3/4" flat
No. 1 round
No. 4 round
with stiff white bristles

SUPPLIES

Cool-melt glue gun and glue sticks
Disposable plate for paint
Graphite transfer paper (light and dark)
Household sponges (two or three)
Paper towels
Pencil
Scissors
Sharpie Fine Point Permanent Marker (black)
Spattering tool, such as an old toothbrush
Stylus
Tracing paper
Water basin to clean brushes

SOURCES

- The materials needed for this project are available at crafts stores or online.
- A Jazzy Turtle Dish Kit is available from Erika Joanne Designs. The kit contains the clay saucers (already glued), the wooden knob, and enough green Fun Foam for the feet, tail, and lily pad. Contact P.O. Box 630, Manchester, WA 98353; (360) 769-8870; or erika@erikajoanne.com.



Teal Green. Once dry, add another coat and let dry again. Clean your brush between each color.

For ease in painting the head, feet, and tail, use a cool-melt glue gun to attach these parts to the body. When attaching the head, be a little bit generous with the glue so that it stays firmly in place. Glue the feet and tail to the bottom of the turtle on the rim of the saucer; look at the photograph to see where to place them.

Now use scissors to cut the sponge into the small square shape and the round shape that we'll use to stamp paint on the turtle's shell. You can trace these shapes from the pattern guide on page 138, exactly as you did the head, feet, and tail.

LET'S PAINT LILY PAD

We'll start the lily pad by shading around its outer edge. Dip just one corner of the 3/4-inch flat brush into a puddle of *Yellow*. Now hold the brush to the edge of the lily pad so that the paint is on the outside. Use a little pressure on the brush, and pull the paint around the entire lily pad. Paint a line down the center of the pad, too.

Rinse out your brush, and use the same technique to shade over the *Yellow* with *Orange* in random places. Rinse the brush again, and repeat this step using *Purple*.

In the picture you'll see wiggly lines around the edge of the lily pad. We'll paint these lines using the no. 1 round brush and the same three paints. Use

the paints one at a time, rinsing the brush out in between. Use the same brush and colors to paint the lines around the center vein, too.

We'll finish the lily pad by spattering paint onto it. Have you ever flicked toothpaste off your toothbrush so that it sprays everywhere? Spattering is almost the same thing, except that we'll use paint.

Start with *Yellow*. Dip the old toothbrush into the paint, and then very carefully and softly rake your thumb over the bristles to spatter the lily pad. (You might want to practice this on your palette or a paper towel first.) Rinse the brush, and repeat the spattering with *Orange* and *Purple*. Finally spatter the pad with a *very little* bit of *Black*.

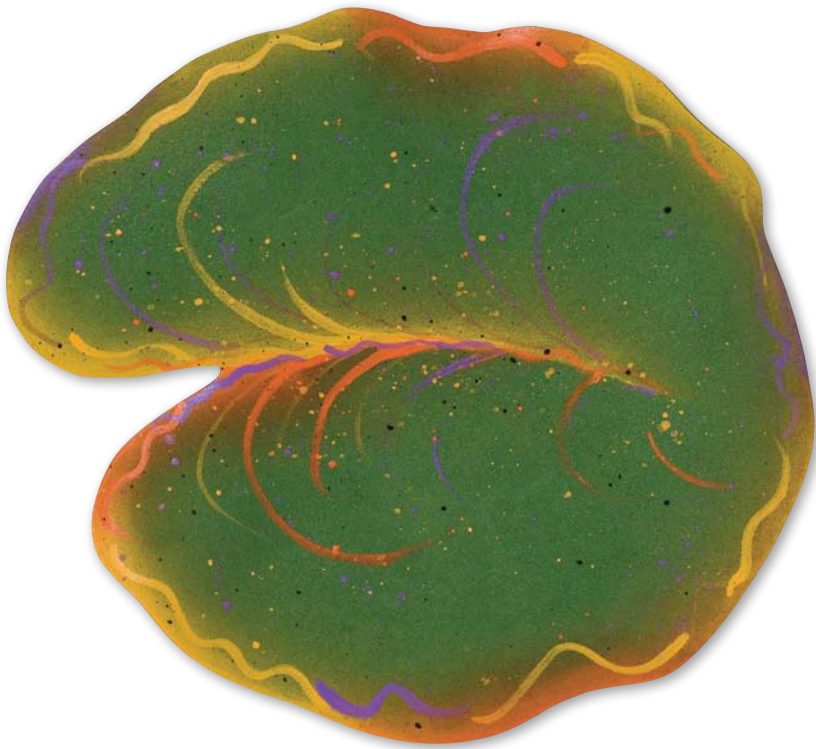
FROG

We'll start the frog by stamping the first layer of green squares on the inside of the shell. First dip the square sponge in clean water and squeeze out the excess. Then dip the sponge into a puddle of *Dark Teal Green*, making sure that the paint completely covers the bottom of the sponge. Before stamping the surface, be sure to stamp the palette a few times to remove any extra paint. Now stamp each square inside the dish carefully, adding more paint to the sponge as needed. Let dry.

Use the round sponge to stamp the next layer of color over the squares. Randomly choose from *Purple*, *Fuchsia*, and *Orange*. Let dry.

Now dip the bottom end of the

STEP BY STEP



STEP 1



STEP 2



STEP 3



Yellow

Orange

Light Green

Dark Teal Green

Purple

Fuchsia

Black

bristle brush into *Yellow*. Use this to add yellow dots to the centers of each stamped color.

Use the *Black Sharpie Pen* to line the smile on the turtle in the middle of his head.

Use the eraser end of a pencil and *Yellow* to carefully dot the large eyes on the head above the smile. Then use the bottom end of the bristle brush to dot the spots on the tail, feet, and top of the head with *Dark Teal Green*. The more pressure you apply, the bigger the dot will be. Let dry.

Next we'll dry-brush a soft layer of color to create the cheeks. Mix a small amount of *Orange+Fuchsia* (1:1). Dip a dry no. 4 round brush with stiff bristles—don't use any water!—into the puddle of mixed paint. Remove the brush, and work it in a circle on a paper towel until there is only a hint of color left in the brush. Then swirl the brush over the cheeks until the color lightly appears, creating soft blush circles.

Use a pencil tip to add small dots to each end of the smile with *Black*. Then carefully use the bottom end of the round bristle brush to dot the pupils in the eyes. Let dry. Fill the dish with your favorite things, and make the turtle smile! 🐢

ARTISTS' SKETCHES

Erika Joanne Frei has been a decorative painter for twenty-two years and a member of SDP since 1999. "I feel it is so important that we expose children to the arts—especially those who struggle in school because of their creative abilities," Erika says. "To give a child the chance to explore with a brush will plant in them a new skill that might blossom into something beautiful."

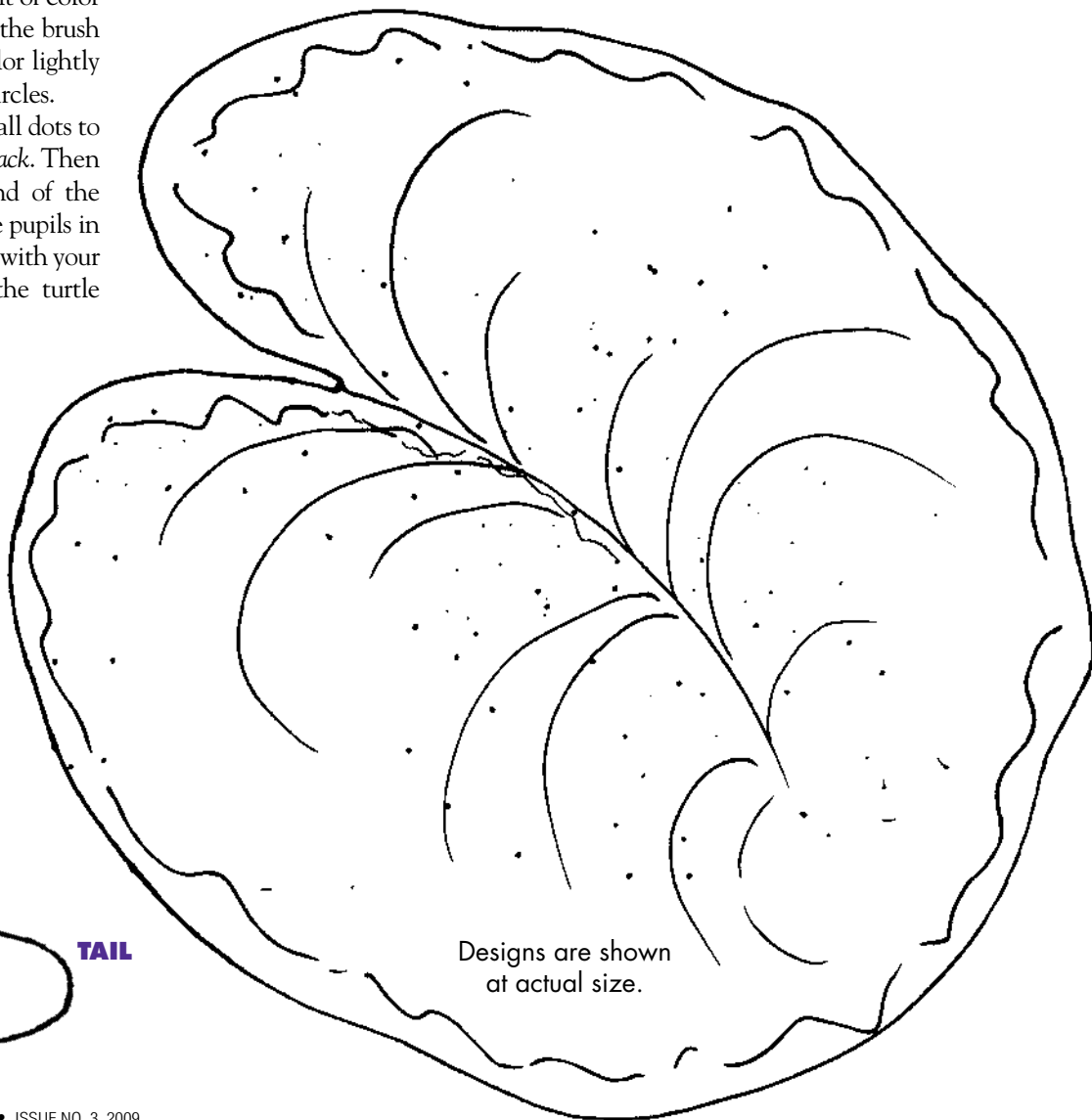
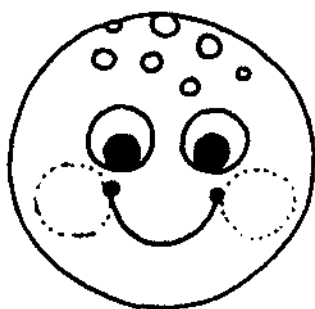
Erika's latest venture with Elaina Appleby is a line of *Paint & Pencil* design packets wherein realistic painting is achieved by basecoating in acrylics and adding detail in colored pencil. You may write to Erika at erika@erikajoanne.com, or visit her website at www.erikajoanne.com.



When Elaina J. Appleby was sixteen she happened to open a bottle of acrylic paint belonging to her mother, and she's been hooked on decorative painting ever since. An SDP member since 1999,

Elaina has operated her own studios, published many magazine articles, and conducted the Paint with Us program at make-it-take-it booths for three SDP Conferences. She is the author of *How Delicious* (Susan Scheewe Publications) and coauthor of two children's painting books with her friend and teacher Erika Joanne Frei. "Children are important to me, and I love teaching them," Elaina says.

Elaina's latest venture is a line of *Paint & Pencil* design packets, which she is developing with Erika Joanne. You may write to Elaina at geapples@aol.com.



Designs are shown at actual size.